

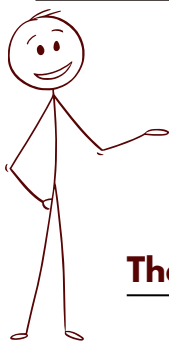
Speaking Assessment



Topic: Shark Tank Pitch **Name:** _____

In this evaluation, you will need to pitch a new invention to the class. You will need to create a presentation to share your new product. In this presentation, you will need to first share what the problem is and what solution you have come up with. Then, you will need to share your product (a picture or a model) and how it works. You will be graded on your presentation skills as well as on how nice your presentation looks, and on the content and your pronunciation.

	1	2	3	4
Presentation Skills	Rarely spoke clearly, rarely used complete sentences without notes	Sometimes spoke clearly, sometimes used complete sentences without notes	Mostly spoke clearly, mostly used complete sentences without notes	Spoke clearly, using complete sentences without notes
Presentation	A poor presentation that is hard to follow	A fine presentation that is somewhat clear to follow	A nice and easy to follow presentation	A beautiful clear and coherent presentation
Content: Problem and Solution	An unclear problem with little evidence of why it needs to be solved, an unclear and irrelevant solution	A somewhat clear problem with some evidence of why it needs to be solved, a somewhat clear and relevant solution	A pretty clear problem with evidence of why it needs to be solved, a pretty clear and relevant solution	A clear problem with evidence of why it needs to be solved, a clear and relevant solution
Content: Product and How it Works	Product is poorly designed and the instructions to use it are unclear and not easy	Product is moderately designed and the instructions to use it are somewhat clear and easy	Product is well designed and the instructions to use it are pretty clear and easy	Product is perfectly designed and the instructions to use it are clear and easy
Pronunciation	Pronunciation could use work	Had mediocre pronunciation	Had good pronunciation	Had great pronunciation



Feedback:

Thank you for sharing your presentation with us! Score: _____