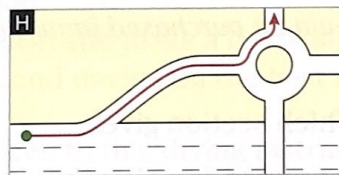
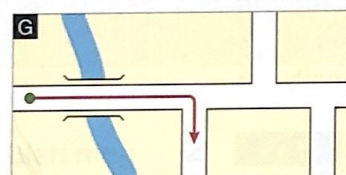
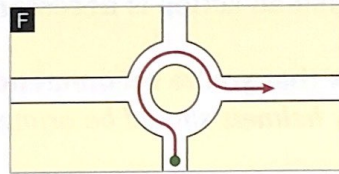
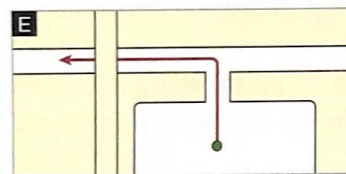
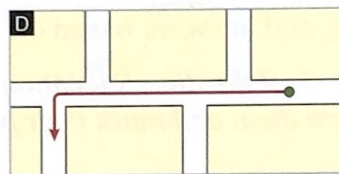
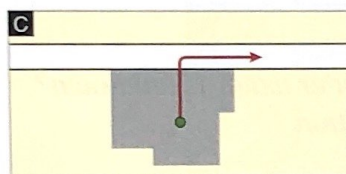
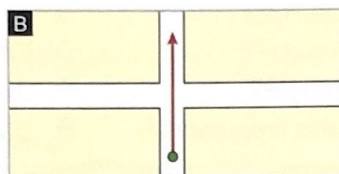
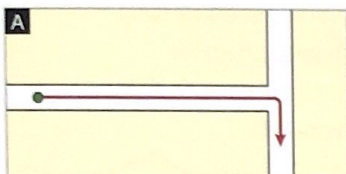


**Start here** 1 Identify these landmarks on the photo.

flyover gantry motorway  
roundabout slip road underpass

**Reading** 2 Match the directions with the maps.



- 1 take the second turning on the left
- 2 take the third exit from the roundabout
- 3 turn right at the T-junction
- 4 come out of the building and turn right
- 5 go straight ahead at the crossroads
- 6 leave the motorway by the slip road and turn left at the roundabout
- 7 go over the bridge and take the first road on the right
- 8 come out of the car park and turn left under the flyover


### Language

First describe the situation ...	then give the instruction
There is a STOP sign at the end of the road.	Turn left here.
There are two sets of traffic lights on this road.	Turn right at the second set.
When you come out of the station,	turn right into Market Street.
You'll see a police station on your left.	Don't turn left here. Take the second turning on the left.
If you cross a bridge over the river, you've gone too far.	Do a U-turn. Go back across the bridge. Then take the first turning on the right.



**Reading 3** Read this email and mark TurboTech on the map.

Delete Reply Reply All Forward New Mailboxes Get Mail
In




Dear Ms Olsen

Thank you for your email yesterday requesting directions to TurboTech. It's located in the Science Park in Cambridge.

After you enter the Science Park, you'll come to a roundabout. At the roundabout, take the second exit (we drive on the left in the UK!). Then go straight ahead. You'll pass a lake on your left. After the lake, you'll see the TurboTech sign. Take the first road on your left, and TurboTech is on your right. Drive into the car park and then walk to the Reception Desk.

I look forward to meeting you and your colleague tomorrow at 11.

Ben Anders, General Manager

- Listening 4**  **18** Listen to these telephone directions and mark the Engineering Department and the Sports Centre on the map.

Note: the university is in a country which drives on the left.

- Speaking 5** Work in pairs, A and B. Give each other telephone directions to places on the map in 4.

Student A.  
Turn to page 112.

Student B.  
Turn to page 114.

- Task 6** Work in pairs. List three local places you know.

- Tell your partner how to get there.
- Listen to your partner's directions and draw sketch maps.
- Exchange maps with your partner and check the details.

